

DWG INFO: c:\SVA\9238\600 CADD\Active\Exhibits\8.5 x 11 Figs\VicinityMap.dwg; October 3, 2016 - 5:16 PM; BUCKE; (C) MOFFATT AND NICHOL



### EXHIBIT 1 - VICINITY MAP



DWG INFO: c:\sva\9238\600 CADD\...\_Exhibits\8.5 x 11 Figs\OverallPlan.dwg; October 4, 2016 - 11:07 AM; BLOCHE; (C) MOFFATT AND NICHOL

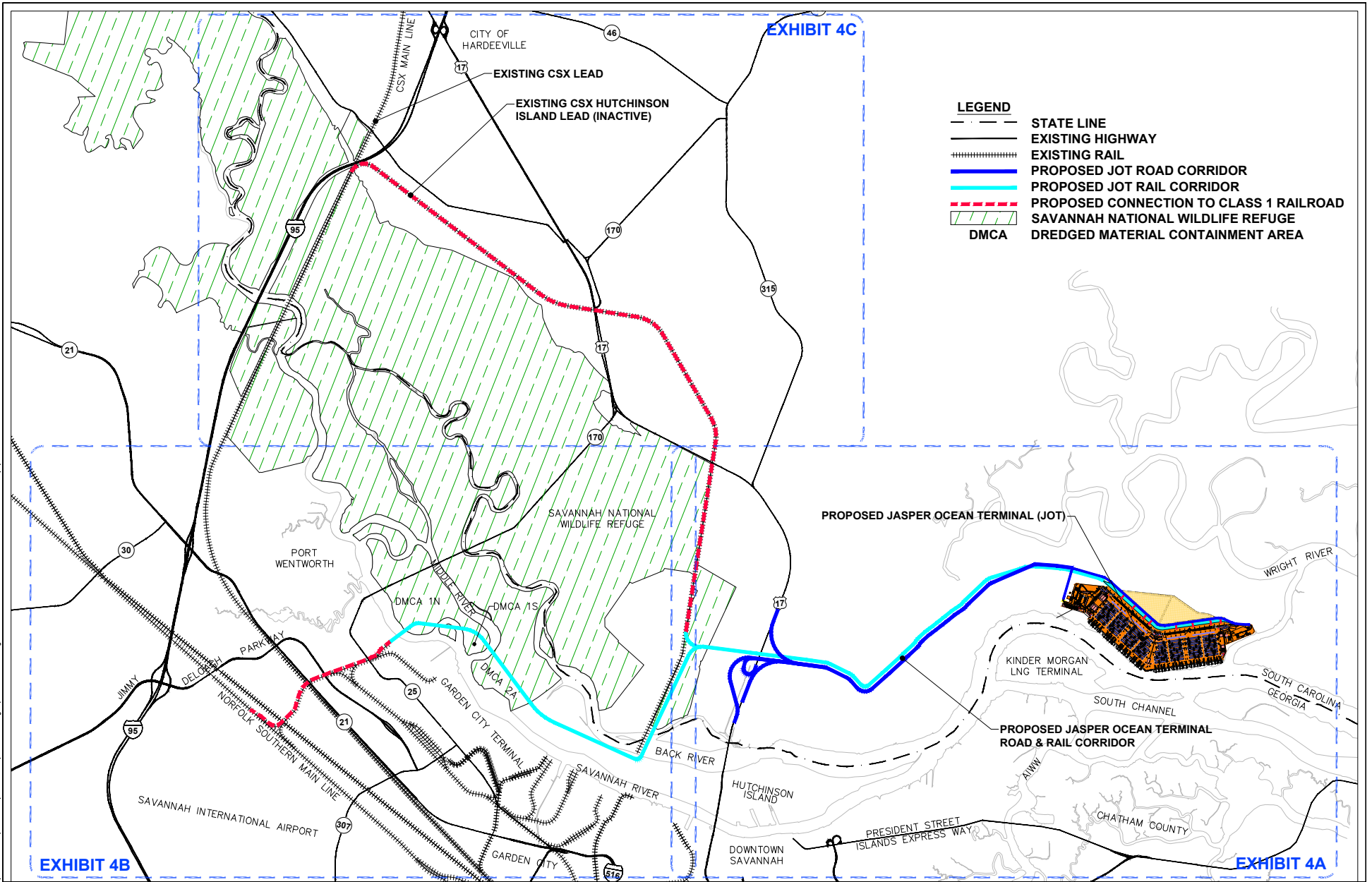


EXHIBIT 4B

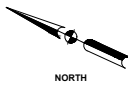
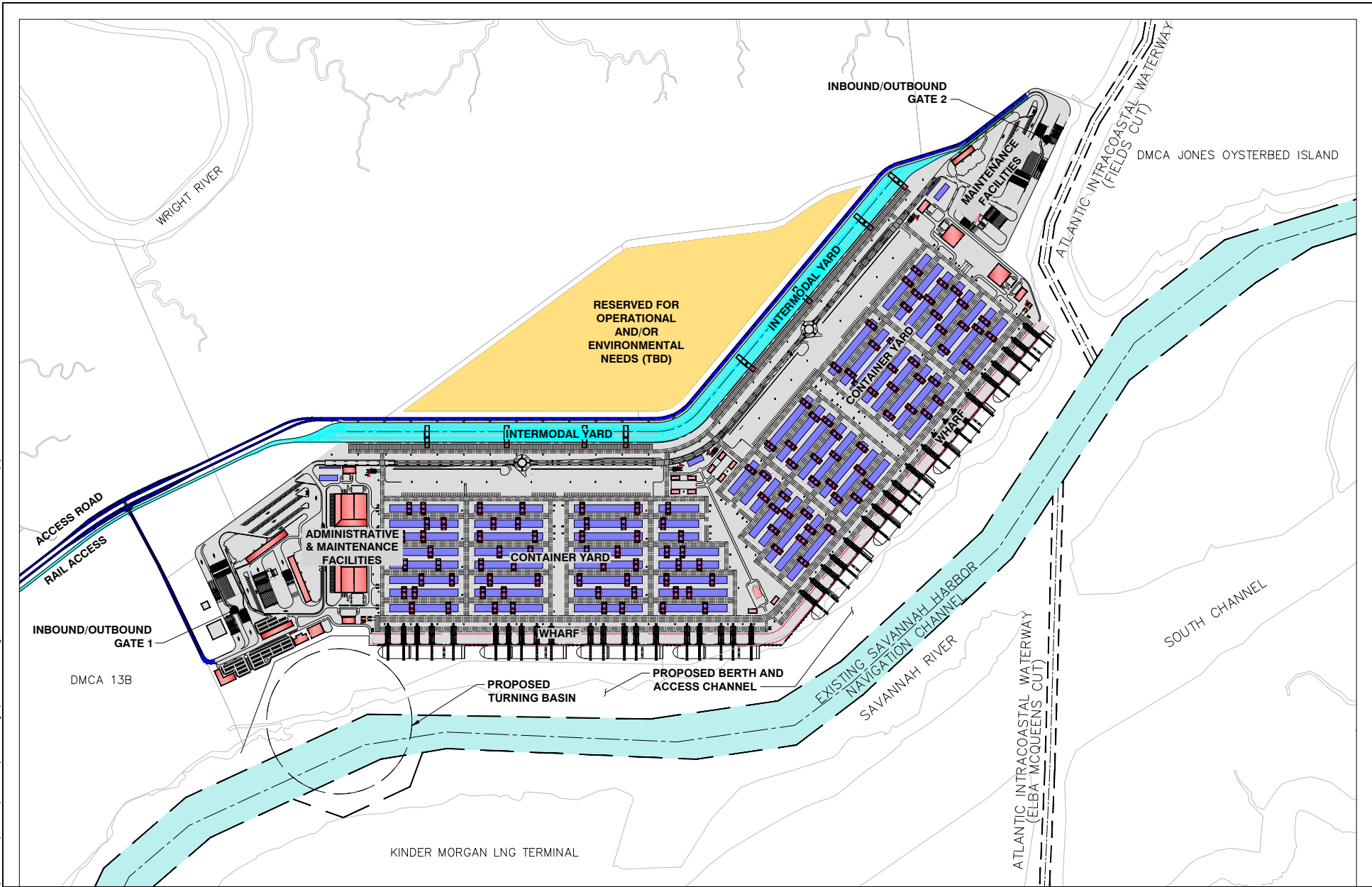
EXHIBIT 4C

EXHIBIT 4A

### EXHIBIT 2 - PROJECT OVERVIEW



DWG INFO: c:\sva\9238\600 CADD\Active\Exhibits\8.5 x 11 Figs\TerminalPlan.dwg; October 4, 2016 - 11:08 AM; BUCKE; (C) MOFFATT AND NICHOL

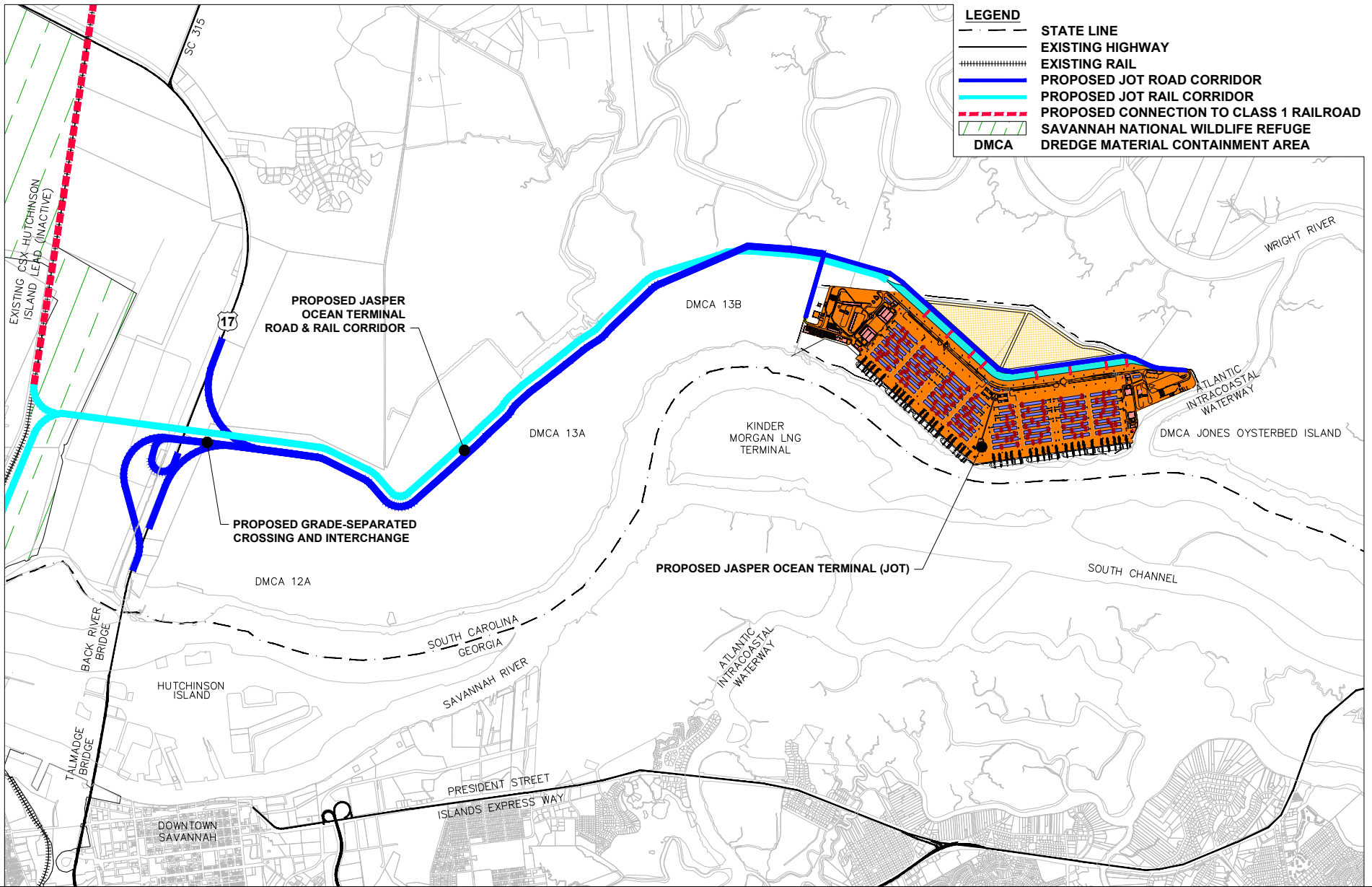


**LEGEND**  
 ——— EXISTING CHANNEL LIMITS  
 DMCA DREDGE MATERIAL CONTAINMENT AREA

**EXHIBIT 3 - PROPOSED TERMINAL**



DWG INFO: c:\sva\9238\600 CADD\...\_Active\Exhibits\8.5 x 11 Figs\TransportationPlan.dwg; October 4, 2016 - 11:12 AM; BLUCKE; (C) MOFFATT AND NICHOL



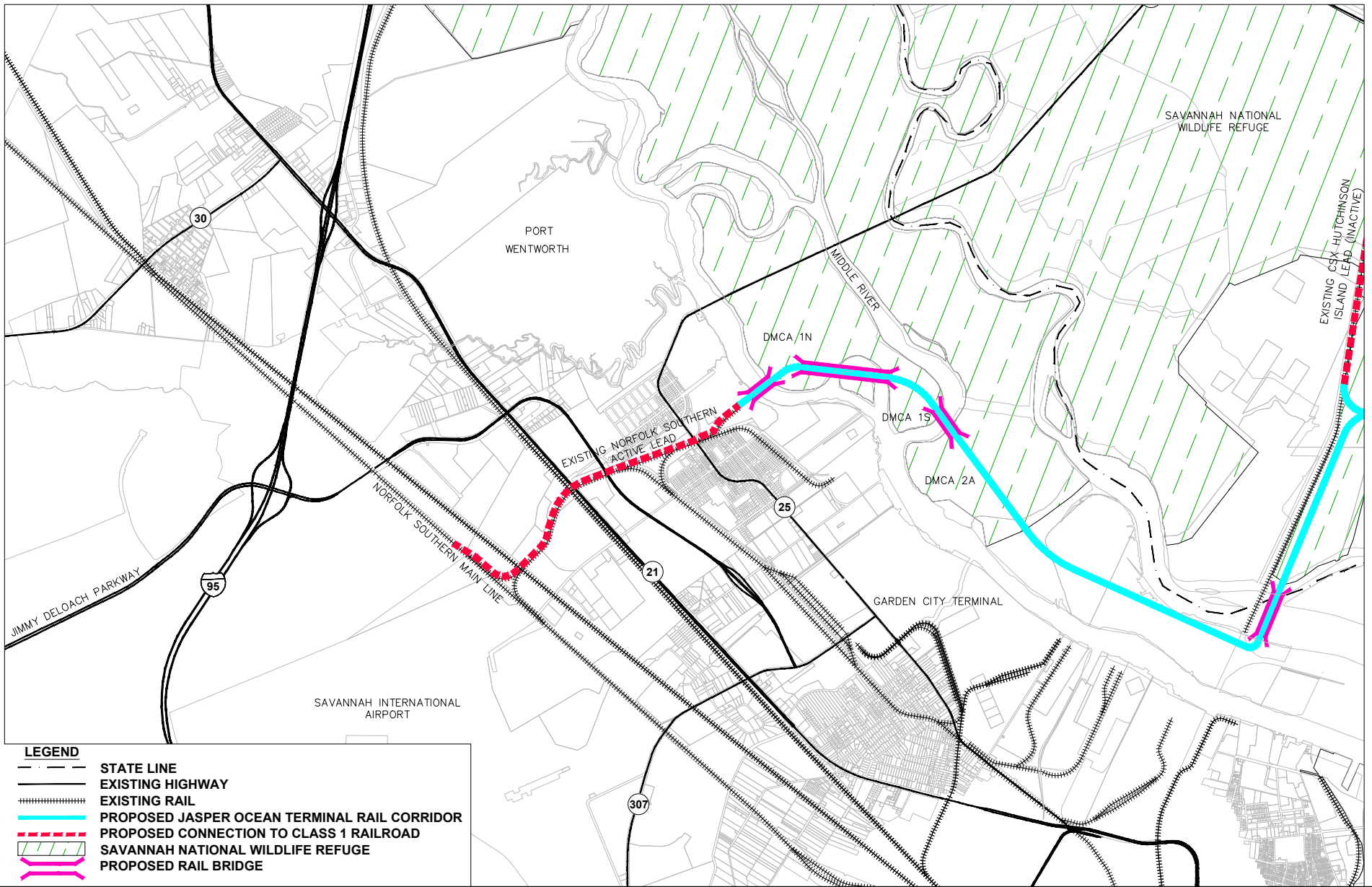
LEGEND	
	STATE LINE
	EXISTING HIGHWAY
	EXISTING RAIL
	PROPOSED JOT ROAD CORRIDOR
	PROPOSED JOT RAIL CORRIDOR
	PROPOSED CONNECTION TO CLASS 1 RAILROAD
	SAVANNAH NATIONAL WILDLIFE REFUGE
	DREDGE MATERIAL CONTAINMENT AREA

### EXHIBIT 4A - ENLARGED PLAN PROPOSED ROAD AND RAIL CORRIDORS

0 1/2 MILE



DWG INFO: c:\sva\9238\600 CADD\Active\Exhibits\8.5 x 11 Figs\TransportationPlan.dwg; October 4, 2016 - 11:37 AM; BLUCKE; (C) MOFFATT AND NICHOL



LEGEND	
	STATE LINE
	EXISTING HIGHWAY
	EXISTING RAIL
	PROPOSED JASPER OCEAN TERMINAL RAIL CORRIDOR
	PROPOSED CONNECTION TO CLASS 1 RAILROAD
	SAVANNAH NATIONAL WILDLIFE REFUGE
	PROPOSED RAIL BRIDGE

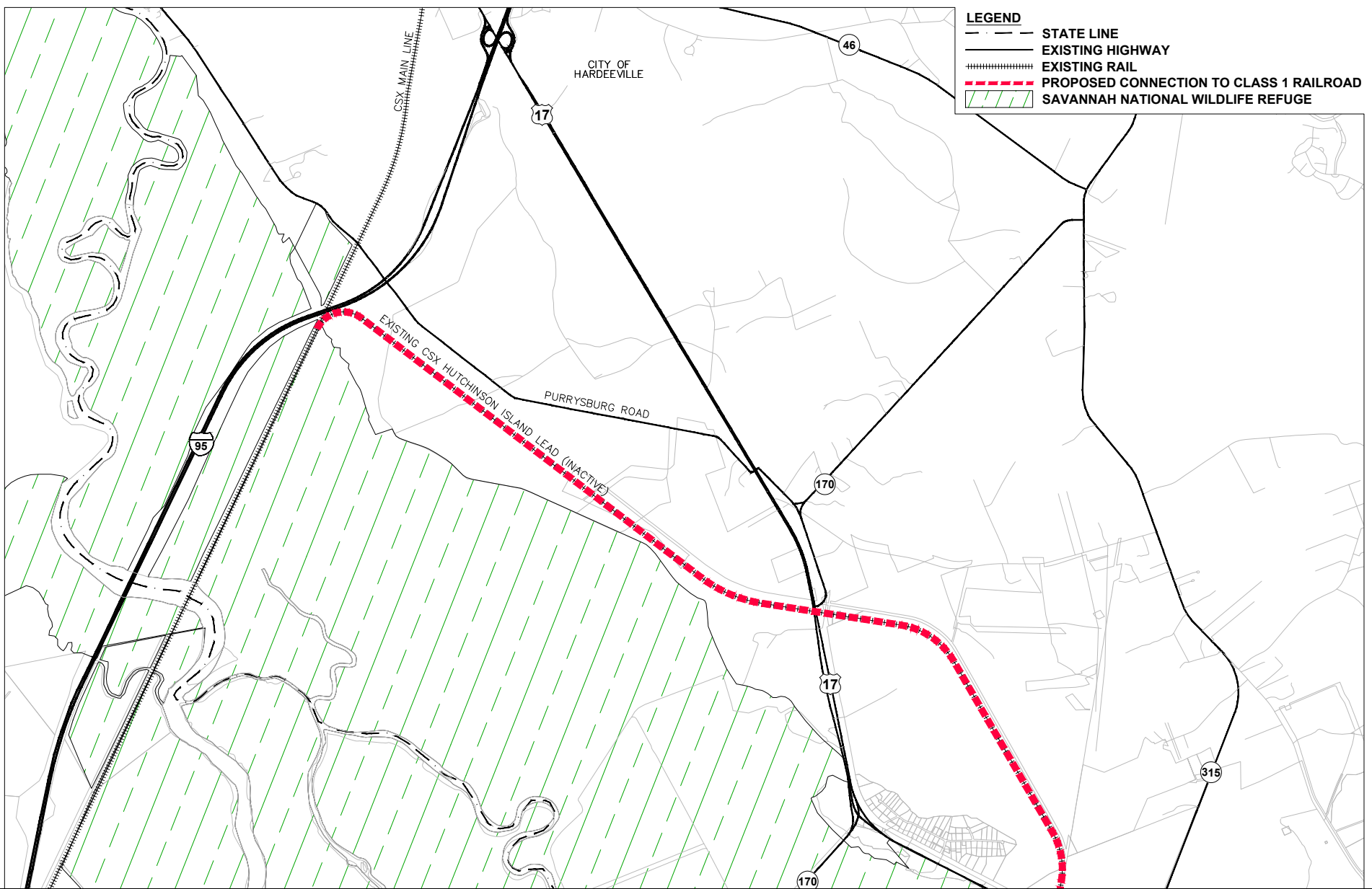


**EXHIBIT 4B - ENLARGED PLAN  
SOUTHERN RAIL CONNECTION**

0 1/2 MILE



DWG INFO: c:\sva\9238\600 CADD\Active\Exhibits\8.5 x 11 Figs\TransportationPlan.dwg; October 4, 2016 - 11:37 AM; BLUCKE; (C) MOFFATT AND NICHOL



### EXHIBIT 4C - ENLARGED PLAN NORTHERN RAIL CONNECTION

